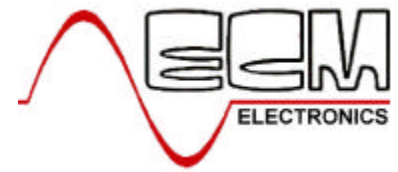
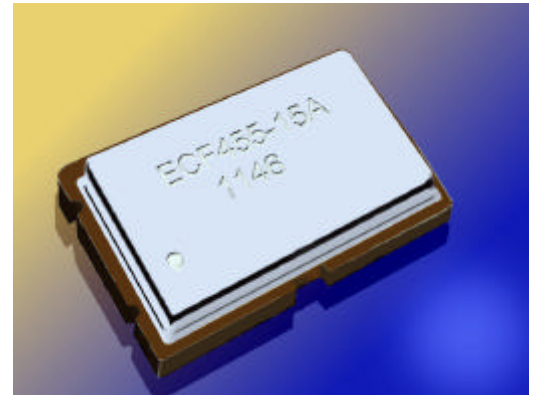


Surface Mount Crystal Filters



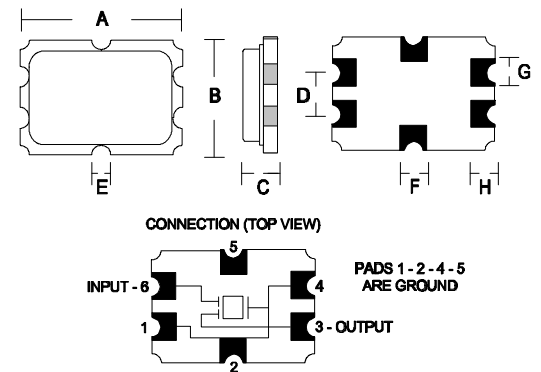
ECF45 Series

- Ultra Thin 1.5mm max
- Surface Mount
- Suitable for Reflow Soldering
- Ceramic to Metal Seal
- Suitable for Pick & Place



Type	Centre Frequency	Ripple (max)	Number Of Poles	Passband Width	Termination Impedance	Case Style
F45S015A	45.0MHz	1.0dB	2	3dB +/-7.50kHz	560Ω//6pF	7x5x1.5mm
F45S030A	45.0MHz	1.0dB	2	3dB +/-15.0kHz	1200Ω//1.8pF	7x5x1.5mm
F44S211B	44.25MHz	1.0dB	4	3dB +/-5.50kHz	430Ω//4pF	7x5x1.5mm

Environmental & Mechanical		
Shock	Random Drop 120 cm 3cycle	No Change in electrical characteristics
Vibration	10-55Hz 1.5mm amplitude in each plane	No Change in electrical characteristics
Solderability	5 Seconds @ 230°C +/-5°C	95% Coverage with a continuous coating
Leakage	Air Leak and Helium Leak	Leak rate 1×10^{-4} atm cc/sec Leak rate 1×10^{-8} atm cc/sec
Damp Heat 2Hrs	+40°C +/-2°C Humidity 90-95%	No Change in electrical characteristics
Temperature 1000Hrs +/- 24Hrs	-25°C +/-3°C +70°C +/-2°C Retest after 2Hrs	No Change in electrical characteristics
Cleaning	Organic Solution	



A	B	C	D	E	F	G	H
7.00	5.00	1.50	2.54	0.60	1.00	1.00	1.20

Dimensions in mm

ECM Electronics Limited, Penmaen House, Ashington, West Sussex, RH20 3JR, UK
Tel: +44(0)1903 892810: Fax: +44(0)1903 892738. Email: ecm@ecmelectronics.co.uk

Although we have attempted to accurately reflect the products we market. ECM reserve the right without prior notice to discontinue any product or make design changes we believe necessary.